



Nick's
 Fire & Security
 7752 Highway 70
 Bartlett, TN. 38133
 (901) 373-0128
 Fax (901) 373-5631

**SHEFFIELD HIGH SCHOOL
 MEMPHIS, TN**

Project # _____

File Name: _____

Date: _____ Salesman _____

Drawn by: _____ Project Mgr. _____

SHEET NAME
FIRE ALARM

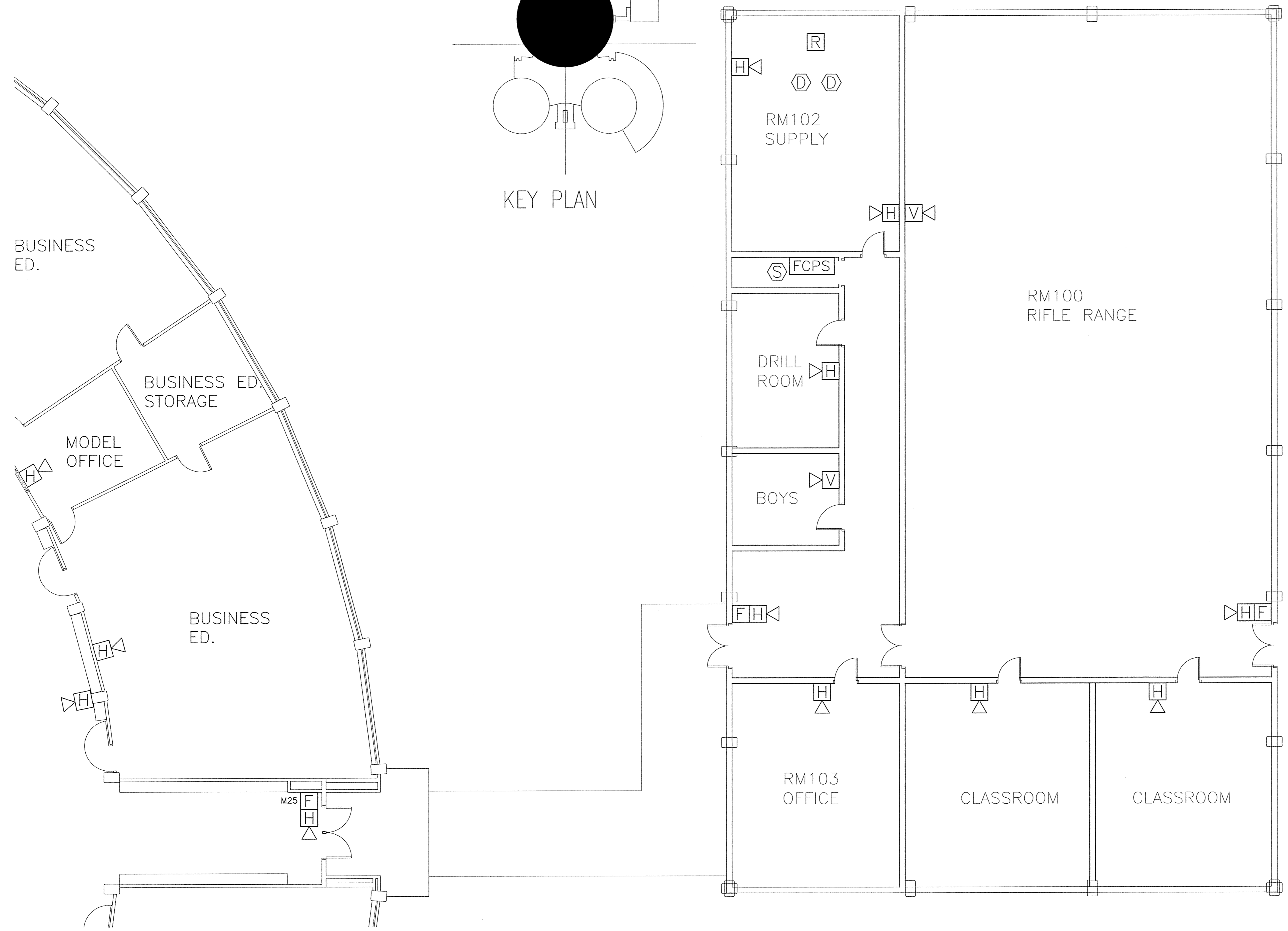
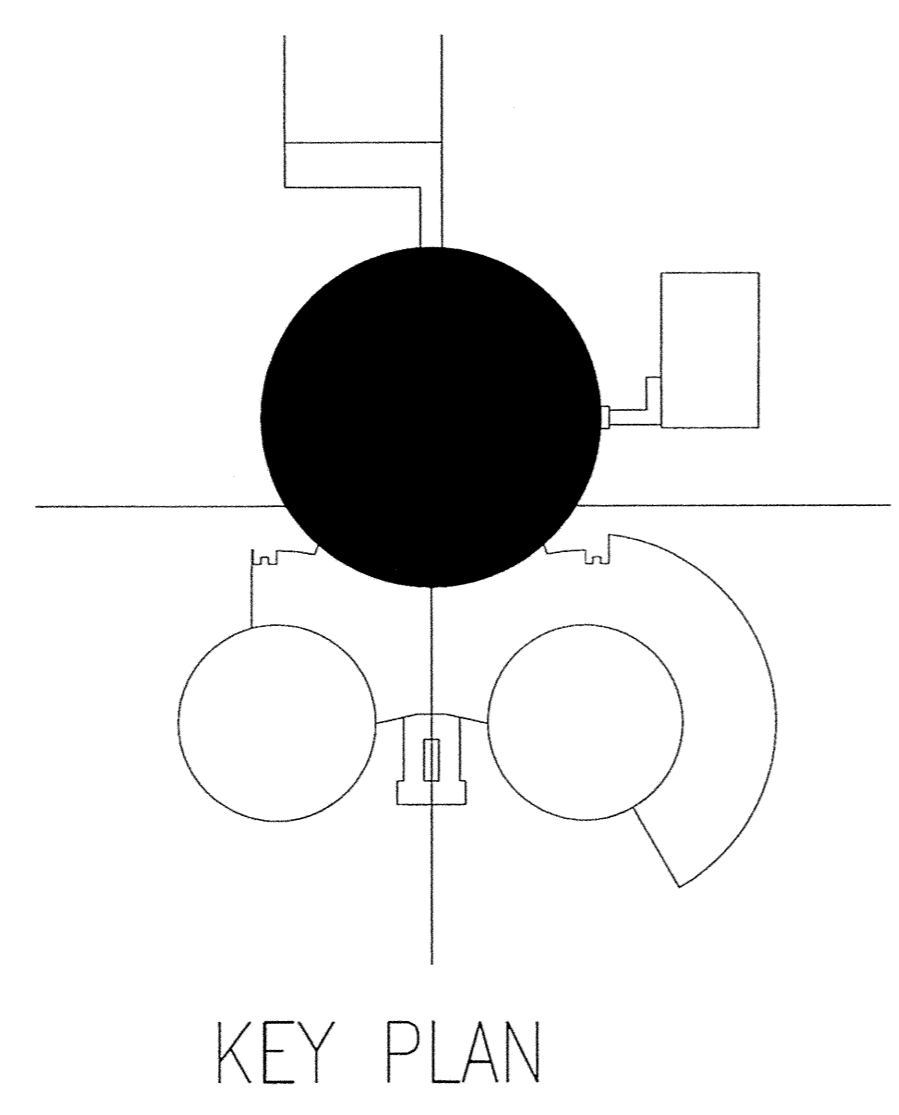
Date: _____ Revisions: _____

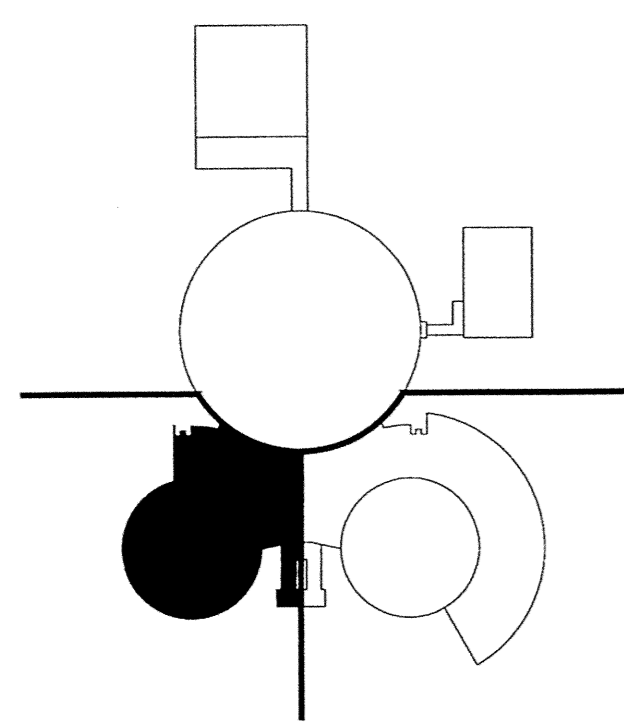
Date: _____ Revisions: _____

Date: _____ Revisions: _____

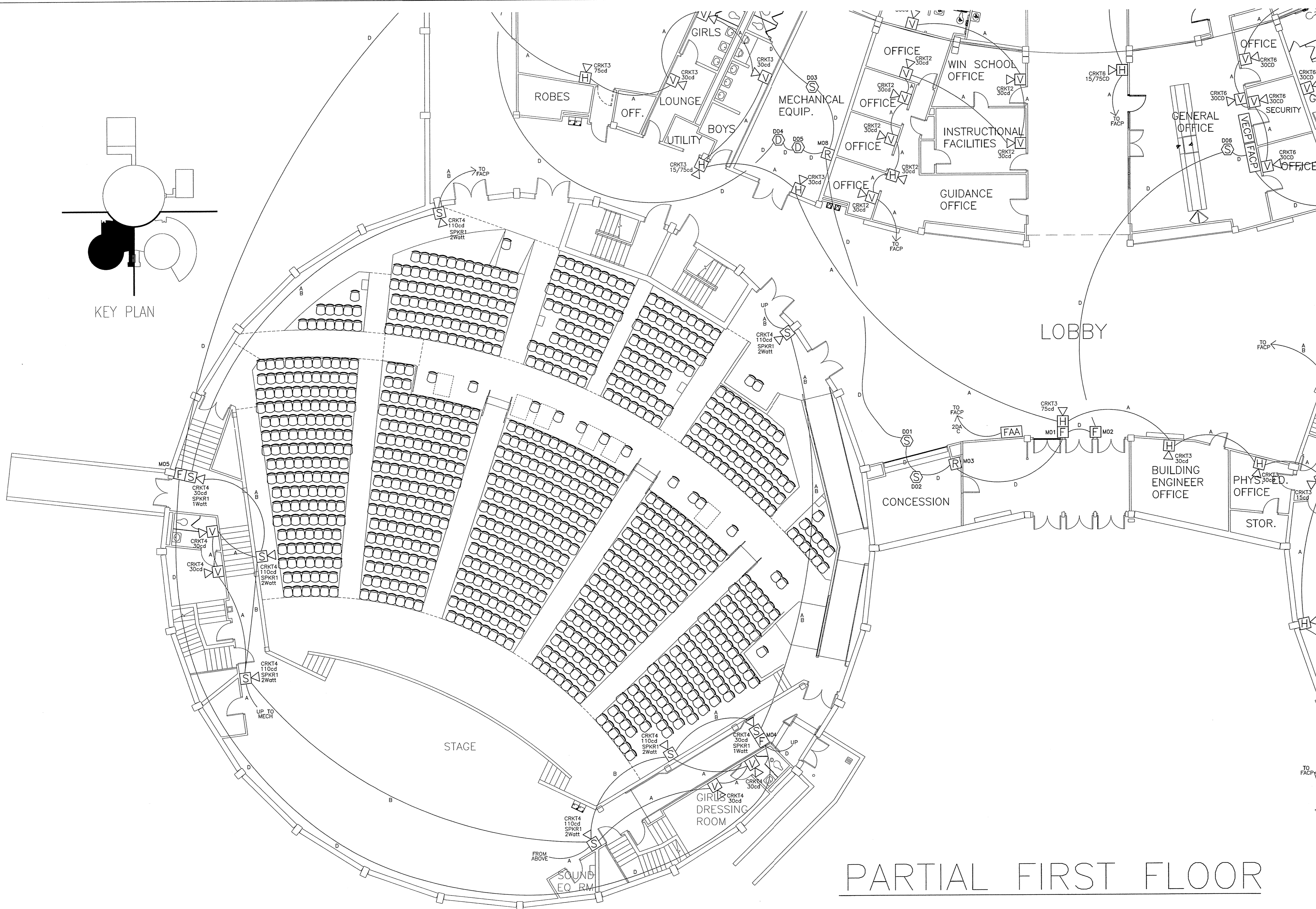
Sheet # _____
 of _____

AS BUILT





KEY PLAN



PARTIAL FIRST FLOOR

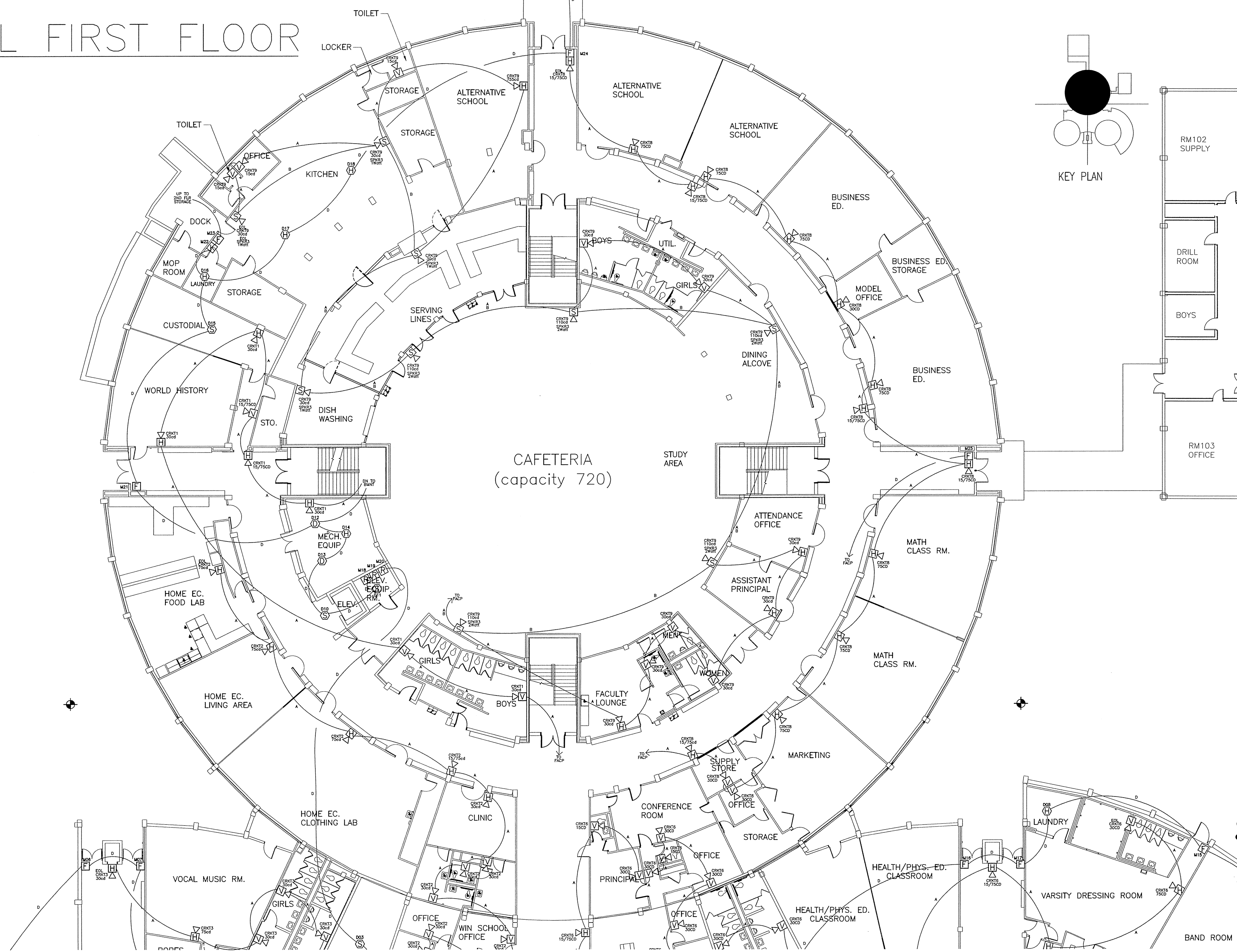
Nickols
 Fire & Security
 7752 Highway 70
 Bartlett, TN. 38133
 (901) 373-0128
 Fax (901) 373-5631

SHEFFIELD HIGH SCHOOL
 MEMPHIS, TN

Project #	
File Name:	
Date:	Salesman
Drawn by:	Project Mgr.
SHEET NAME	
FIRE ALARM	
Date:	Revisions:
Date:	Revisions:
Date:	Revisions:
Date:	Revisions:
Sheet #	
1	10
of	

AS BUILT

PARTIAL FIRST FLOOR



Fire & Security

7752 Highway 70
Bartlett, TN. 38133

(901) 373-0128
Fax (901) 373-5631

SHEFFIELD HIGH SCHOOL MEMPHIS, TN

Project #

File Name:

Date: Salesman

Drawn by: Project Mgr.

SHEET NAME

FIRE ALARM

Date: Revisions:

Date: Revisions:

Date: Revisions:

Date: Revisions:

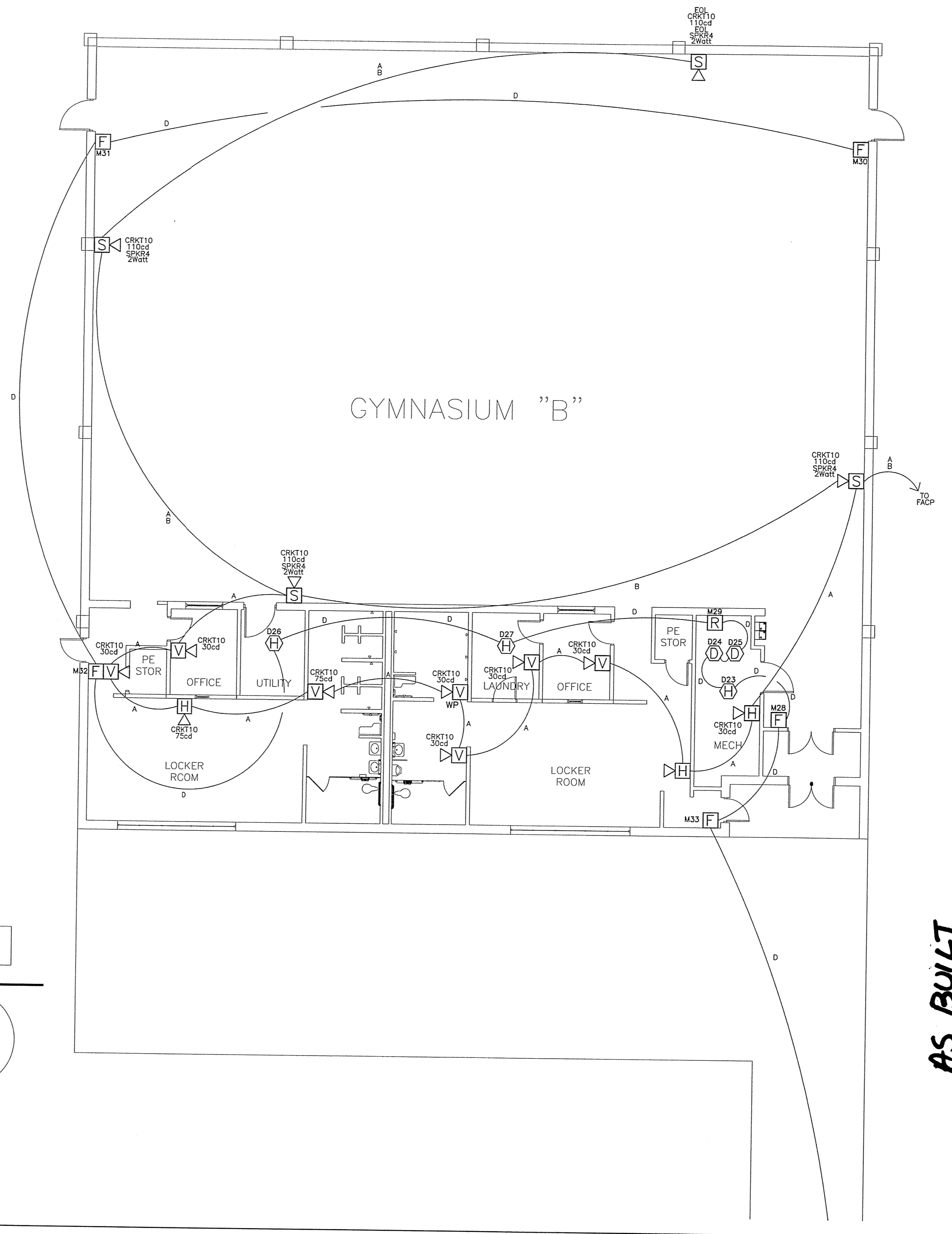
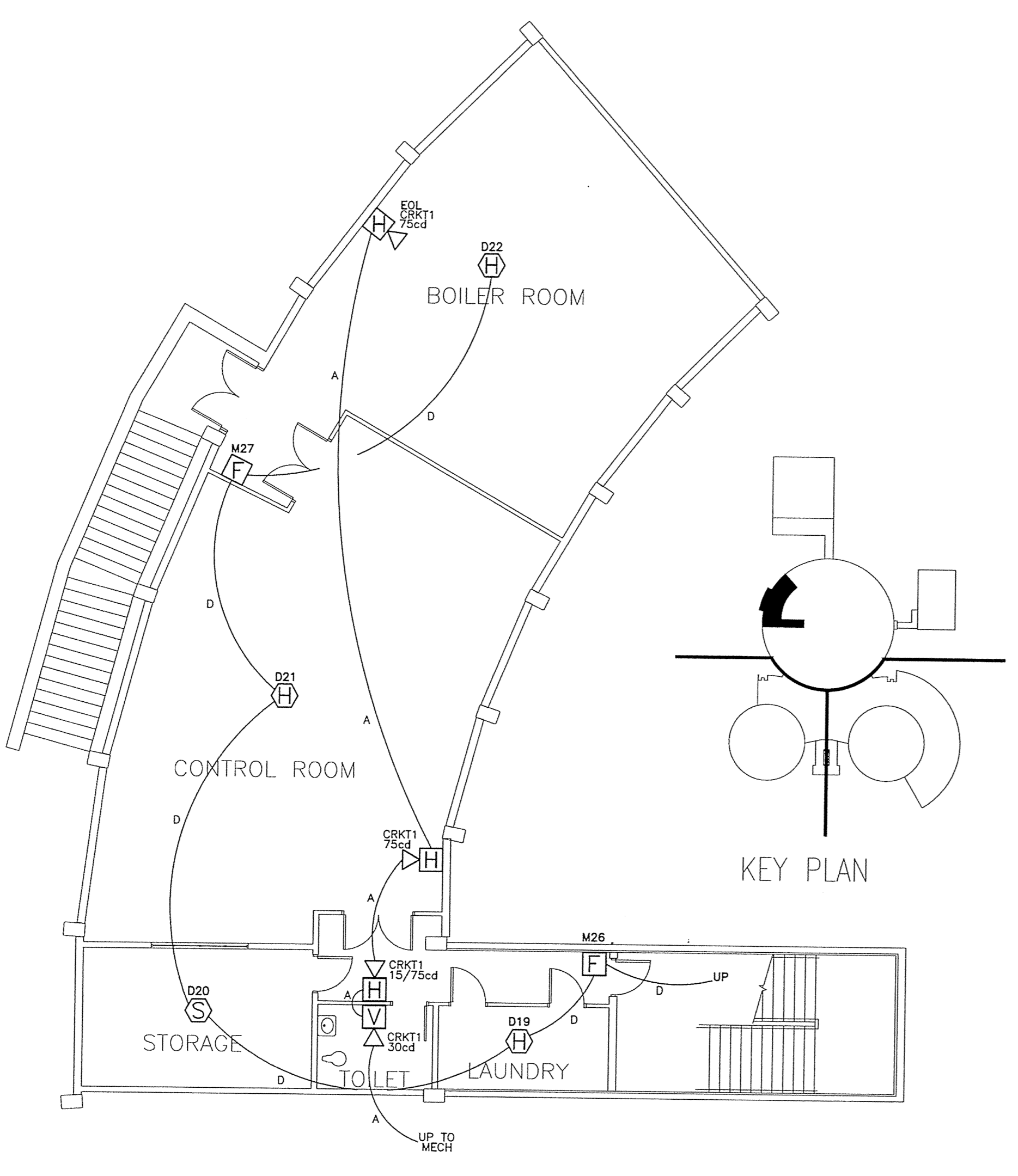
Sheet #

3 10
of

AS BUILT

Nick c/s
 Fire & Security
 7752 Highway 70
 Bartlett, TN. 38133
 (901) 373-0128
 Fax (901) 373-5631

**SHEFFIELD HIGH SCHOOL
 MEMPHIS, TN**



AS BUILT

Project #	
File Name:	
Date:	Salesman
Drawn by:	Project Mgr.
SHEET NAME	
FIRE ALARM	
Date:	Revisions:
Date:	Revisions:
Date:	Revisions:
Sheet #	
4	10
of	

Nickels
Fire & Security

7752 Highway 70
Bartlett, TN. 38133

(901) 373-0128
Fax (901) 373-5631

**SHEFFIELD HIGH SCHOOL
MEMPHIS, TN**

Project #

File Name:

Date: Salesman

Drawn by: Project Mgr.

SHEET NAME

FIRE ALARM

Date: Revisions:

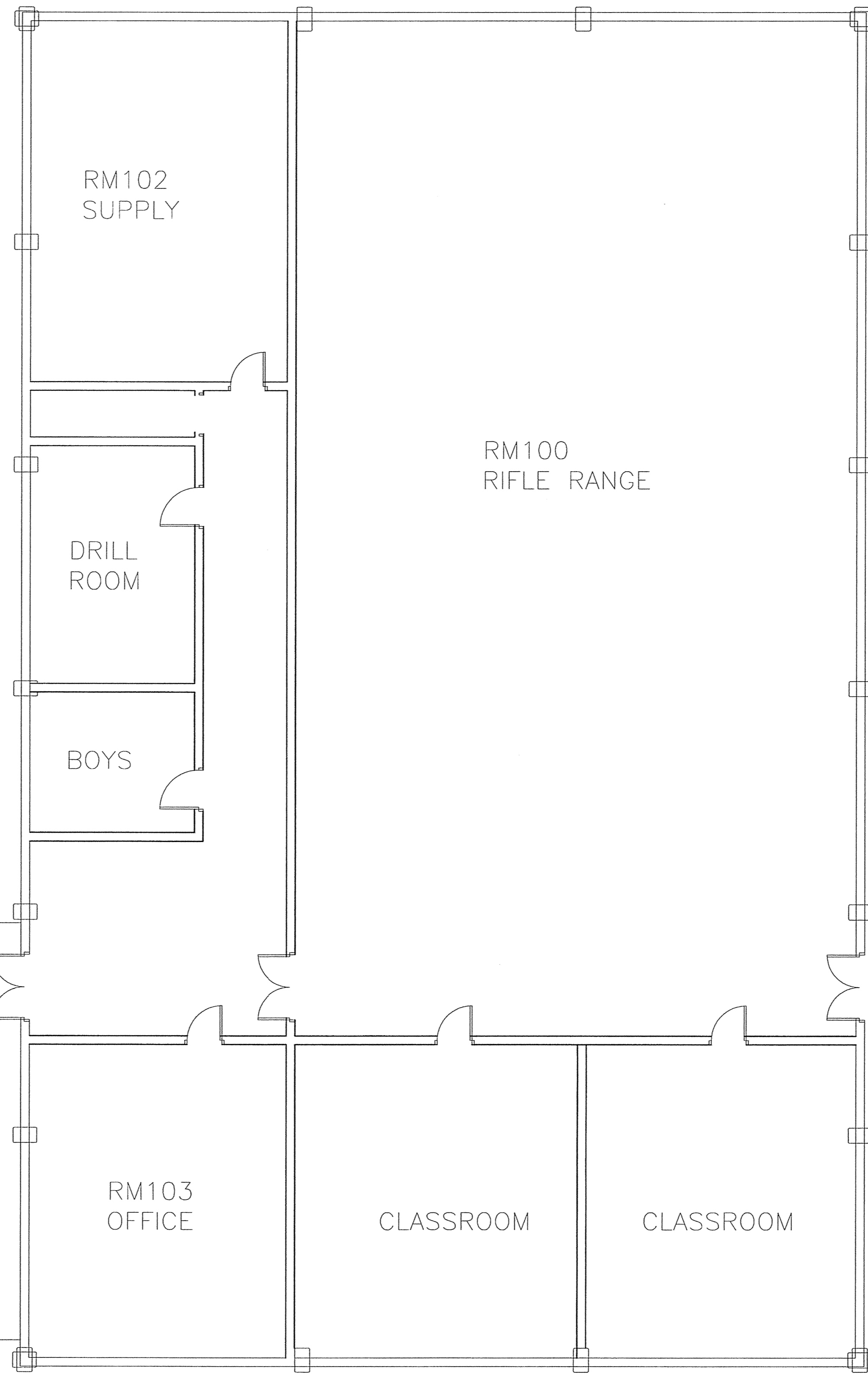
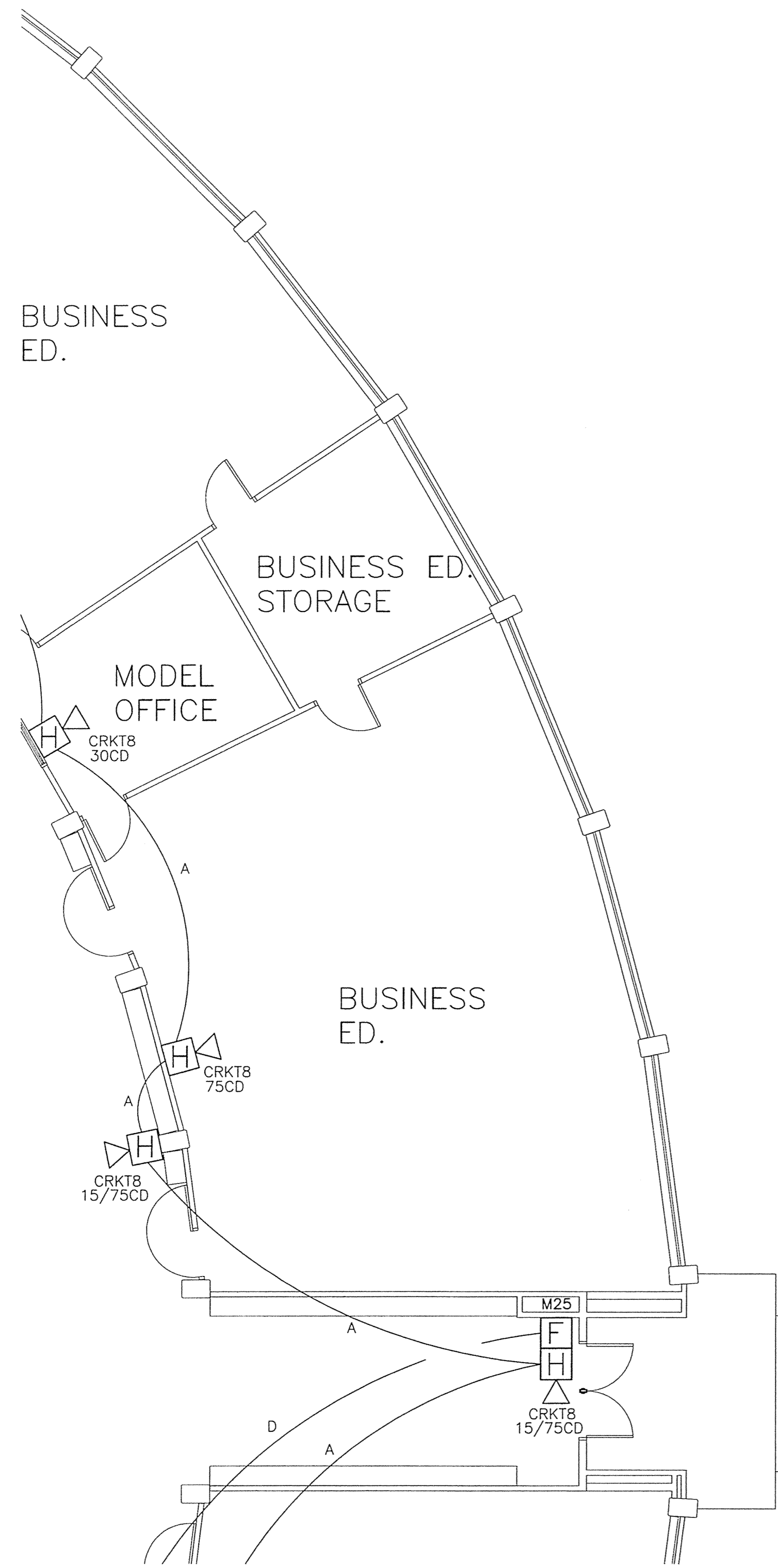
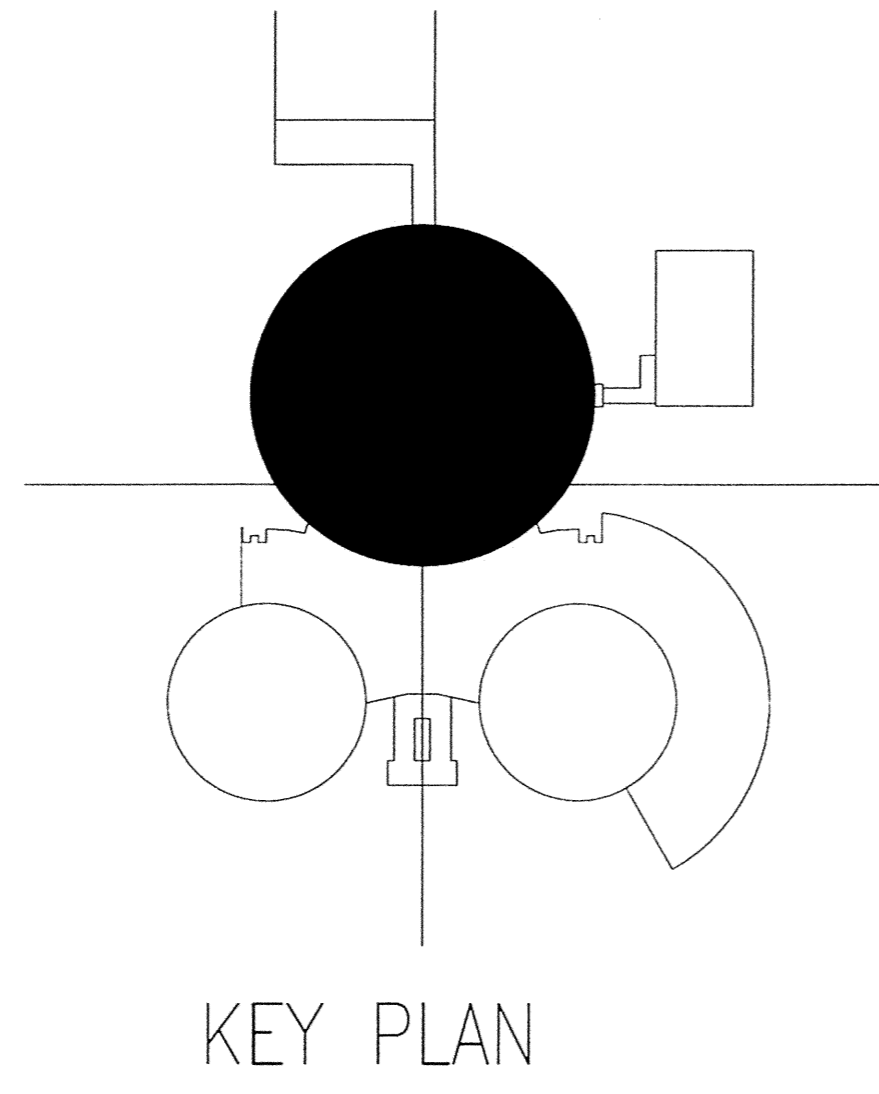
Date: Revisions:

Date: Revisions:

Sheet #

5 of **10**

As BUILT



PARTIAL SECOND FLOOR

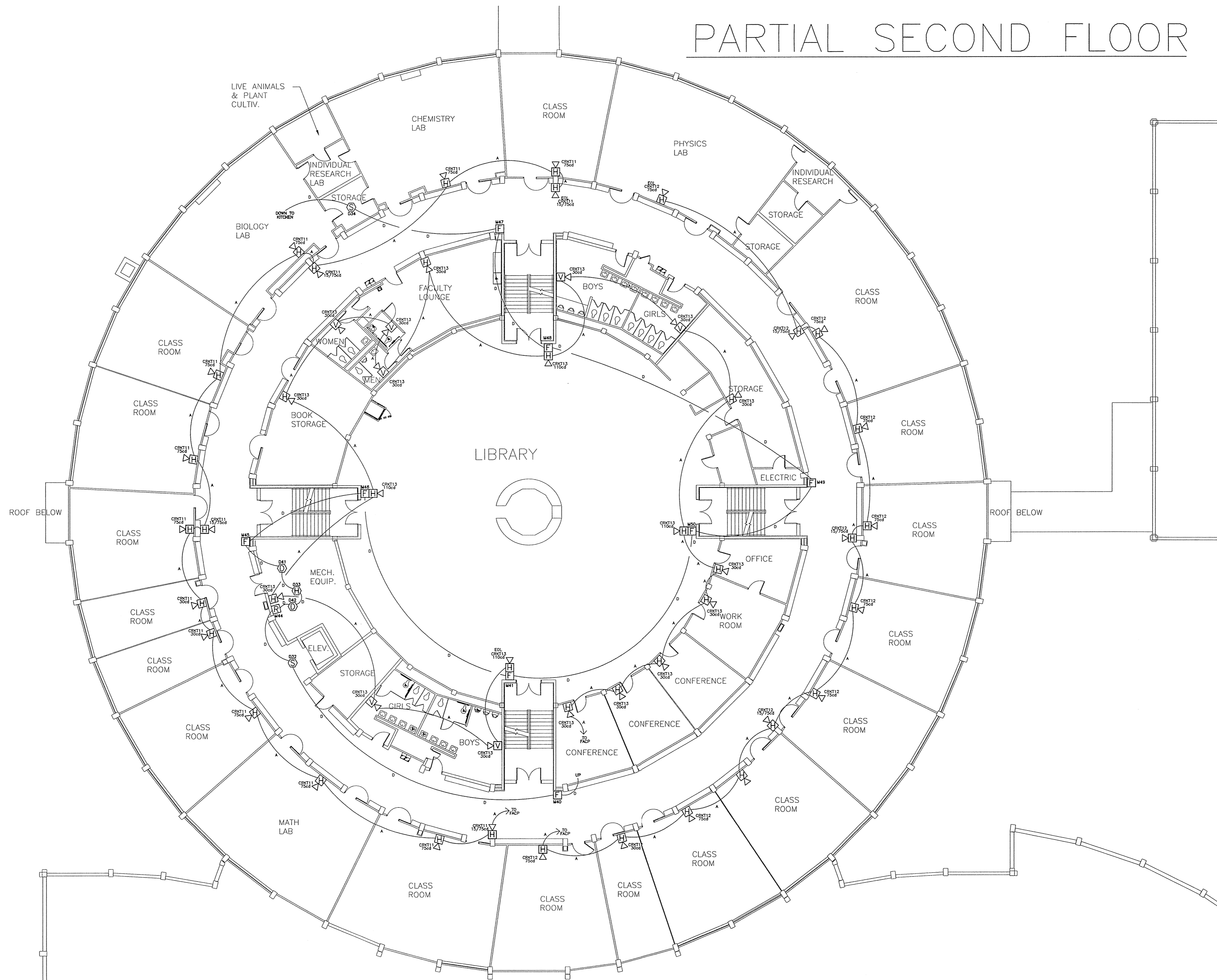
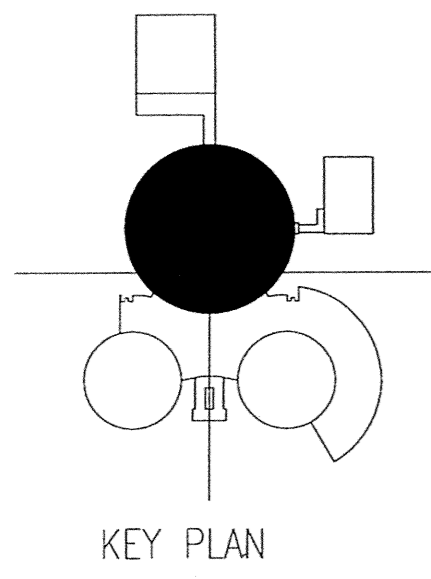
Nickols

Fire & Security

7752 Highway 70
Bartlett, TN. 38133

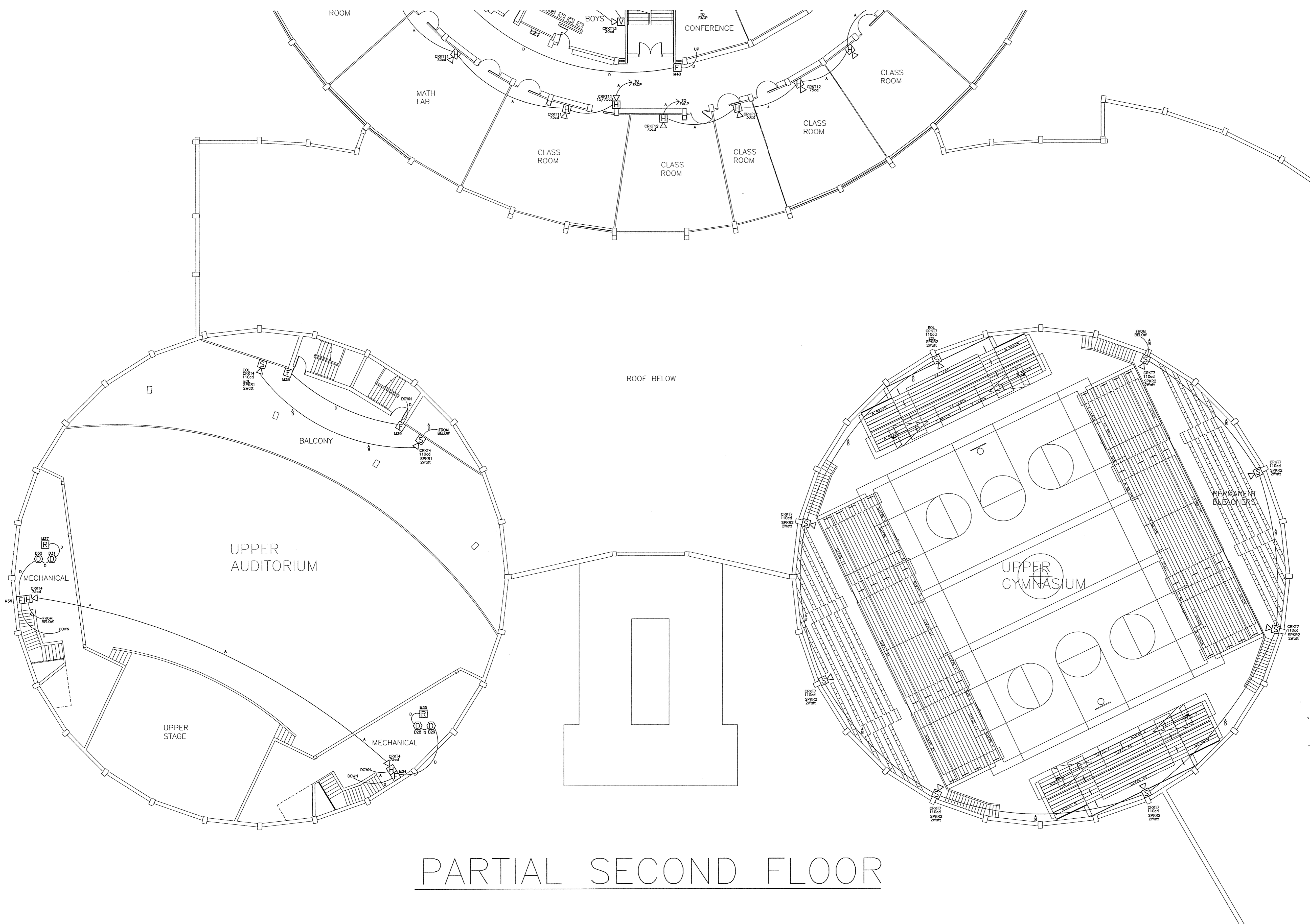
(901) 373-0128
Fax (901) 373-5631

**SHEFFIELD HIGH SCHOOL
MEMPHIS, TN**



AS BUILT

Project #	
File Name:	
Date:	Salesman
Drawn by:	Project Mgr.
SHEET NAME	
FIRE ALARM	
Date:	Revisions:
Date:	Revisions:
Date:	Revisions:
Sheet #	
6	10
of	



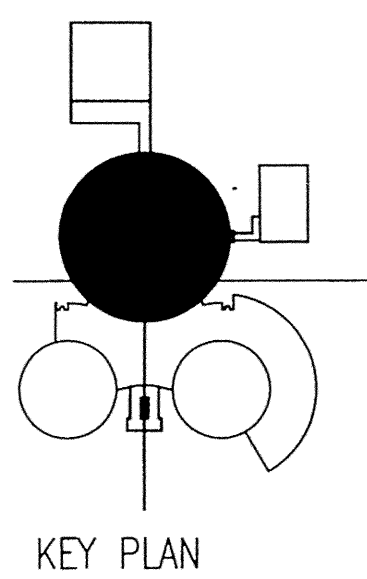
PARTIAL SECOND FLOOR

Nickols
 Fire & Security
 7752 Highway 70
 Bartlett, TN. 38133
 (901) 373-0128
 Fax (901) 373-5631

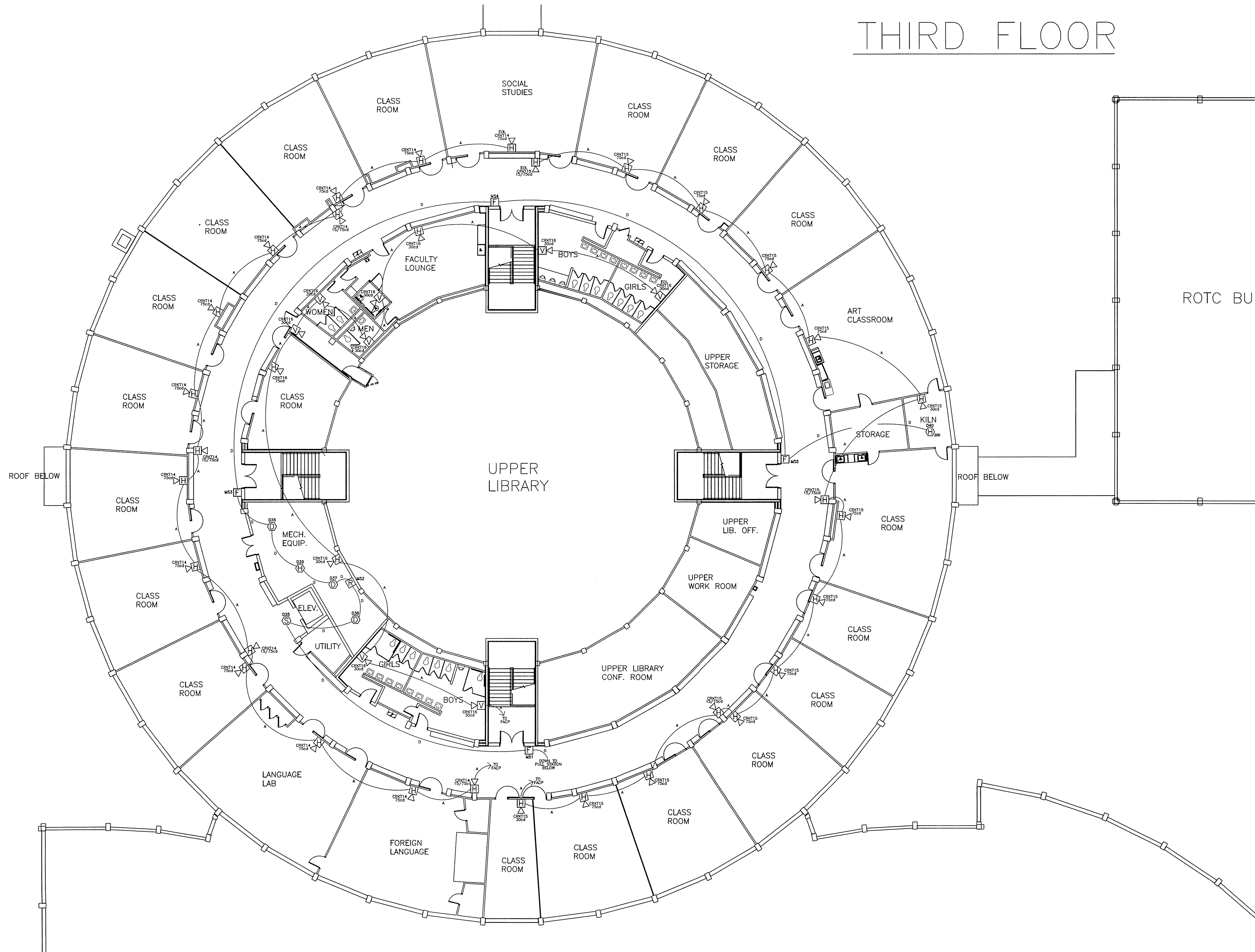
**SHEFFIELD HIGH SCHOOL
 MEMPHIS, TN**

Project #	
File Name:	
Date:	Salesman
Drawn by:	Project Mgr.
SHEET NAME	
Date:	Revisions:
Date:	Revisions:
Date:	Revisions:
Sheet #	
7 10	
of	

AS BUILT



THIRD FLOOR



Nickols
 Fire & Security
 7752 Highway 70
 Bartlett, TN. 38133
 (901) 373-0128
 Fax (901) 373-5631

SHEFFIELD HIGH SCHOOL
MEMPHIS, TN

Project #	
File Name:	
Date:	Salesman
Drawn by:	Project Mgr.
SHEET NAME	
FIRE ALARM	
Date:	Revisions:
Date:	Revisions:
Date:	Revisions:
Sheet #	
8	10
of	

As BUILT

LEGEND

	DESCRIPTION	PART#	REQUIRES	MOUNTING HEIGHTS
FACP	FIRE ALARM CONTROL PANEL	NFS-320	SBB BACKBOX	N/A
FAA	FIRE ALARM ANNUNCIATOR PANEL	LCD-80	ABS-1T BACKBOX	N/A
FCPS	BOOSTER POWER SUPPLY	FCPS-24S8	INTEGRAL BACKBOX	N/A
F	MANUAL PULL STATION	BNG-1R	BG-2R SURFACE BACKBOX	48" CENTER A.F.F.
⊙	SMOKE DETECTOR	FSP-851 w/B710LP	3-1/2" OCTAGON BOX	N/A
⊕	THERMAL DETECTOR	FST-851 w/B710LP	3-1/2" OCTAGON BOX	N/A
⊖	DUCT MOUNTED SMOKE DETECTOR	FSP-751 w/ST-3	N/A	N/A
▷▽	STROBE UNIT	SR	4" SQUARE BACKBOX w/BBS2	82" A.F.F. or 6" BELOW CEILING WHICHEVER IS LOWEST TO CENTER OF DEVICE
▷□	HORN/STROBE UNIT	P2R	4" SQUARE BACKBOX w/BBS2	82" A.F.F. or 6" BELOW CEILING WHICHEVER IS LOWEST TO CENTER OF DEVICE
▷⊞	SPEAKER/STROBE UNIT	SPSR	4" SQUARE BACKBOX w/SPBBS	82" A.F.F. or 6" BELOW CEILING WHICHEVER IS LOWEST TO CENTER OF DEVICE
⊞	RELAY MODULE	FRM-1	4" SQUARE DEEP BACKBOX	N/A
D	WEST PENN FIRE ALARM CABLE FOR DATA LOOP		WP-D990 16/2 TWISTED/UNSHIELDED DATA GRADE FIRE ALARM CABLE	
A	WEST PENN FIRE ALARM CABLE FOR HORN/STROBE CIRCUITS		WP-D994 14/2 TWISTED/UNSHIELDED FIRE ALARM CABLE	
B	WEST PENN FIRE ALARM CABLE FOR SPEAKER CIRCUITS		WP-975 18/2 TWISTED/SHIELDED FIRE ALARM CABLE	
DA	WEST PENN FIRE ALARM CABLE FOR ANNUNCIATOR DATA		WP-975 18/2 TWISTED/SHIELDED FIRE ALARM CABLE	
C	WEST PENN FIRE ALARM CABLE FOR ANNUNCIATOR POWER		WP-D994 14/2 TWISTED/UNSHIELDED FIRE ALARM CABLE	

FIRE ALARM NOTES:

- 1) FIRE ALARM CONTROL PANEL, VECP & FCPS PANELS REQUIRE A DEDICATED 110V 20 AMP CIRCUIT
- 2) CEILING SMOKE DETECTORS SHALL NOT BE INSTALLED WITHIN 3 FT OF AN AIR REGISTER
- 3) USE ONLY APPROVED FACTORY KNOCKOUTS FOR ENTRY INTO FACP PANEL
- 4) DO NOT ENTER THE BOTTOM OF FACP, VECP OR FCPS PANELS AS BATTERYS WILL BE LOCATED THERE
- 5) ALL FIRE ALARM SYSTEM WIRING SHALL COMPLY WITH THE NATIONAL ELECTRICAL CODE, APPLICABLE STATE & LOCAL FIRE AND SAFETY CODES, AS WELL AS BEING COORDINATED WITH THE LOCAL AUTHORITY HAVING JURISDICTION.
- 6) DO NOT CONNECT ANY POWER TO CONTROL PANEL (BATTERIES OR 120VAC) UNTIL ALL OTHER FIELD WIRING IS TESTED & CONNECTED.
- 7) DO NOT INSTALL ANY A.C. CURRENT CARRYING CONDUCTORS CLOSE TO OR IN THE SAME RACEWAY WITH FIRE ALARM SYSTEM CONDUCTORS.
- 8) PROVIDE TWO DEDICATED TELEPHONE LINES AT FACP PANEL FOR MONITORING.
- 9) NEC GROUND IS REQUIRED AT FACP PANEL, VECP & FCPS PANELS FOR GROUNDING
- 10) RELAY MODULES FOR AHU SHUTDOWN SHOULD BE LOCATED AT THE OPTIMAL LOCATION TO SHUT DOWN THE UNIT IMMEDIATELY (NO DELAY ALLOWED).

Nickels
Fire & Security

7752 Highway 70
Bartlett, TN. 38133

(901) 373-0128
Fax (901) 373-5631

SHEFFIELD HIGH SCHOOL
MEMPHIS, TN

Project #

File Name:

Date: Salesman

Drawn by: Project Mgr.

SHEET NAME

FIRE ALARM

Date: Revisions:

Date: Revisions:

Date: Revisions:

Sheet #

9 10

of

AS BUILT

ADDRESS SCHEDULE

M01	MANUAL PULL STATION - MAIN ENTRANCE	D01	SMOKE DETECTOR - CONCESSION CORRIDOR
M02	MANUAL PULL STATION - MAIN ENTRANCE	D02	SMOKE DETECTOR - CONCESSION
M03	RELAY MODULE - CONCESSION DOOR CONTROL	D03	SMOKE DETECTOR - 1ST FLR MECH ROOM
M04	MANUAL PULL STATION - AUDITORIUM EAST	D04	DUCT DETECTOR - 1ST FLR MECH RM SOUTH
M05	MANUAL PULL STATION - AUDITORIUM WEST	D05	DUCT DETECTOR - 1ST FLR MECH RM SOUTH
M06	MANUAL PULL STATION - CORRIDOR WEST	D06	SMOKE DETECTOR - MAIN OFFICE
M07	MANUAL PULL STATION - CORRIDOR WEST	D07	SMOKE DETECTOR - STORAGE BY PAINT BOOTH
M08	RELAY MODULE - AHU SHUTDOWN 1ST FLOOR MECH ROOM	D08	THERMAL DETECTOR - LAUNDRY/VARSITY DRESSING
M09	MANUAL PULL STATION - GYM	D09	THERMAL DETECTOR - UTILITY
M10	MANUAL PULL STATION - GYM	D10	SMOKE DETECTOR - FIRST FLOOR ELEVATOR LOBBY
M11	MANUAL PULL STATION - 1ST FLOOR CORRIDOR SOUTH	D11	SMOKE DETECTOR - ELEV EQ ROOM
M12	MANUAL PULL STATION - DIVERSIFIED TECHNOLOGIES	D12	DUCT DETECTOR - 1ST FLR MECH RM NORTH
M13	MANUAL PULL STATION - 1ST FLOOR PHYSICAL REHAB	D13	DUCT DETECTOR - 1ST FLR MECH RM NORTH
M14	MANUAL PULL STATION - BAND ROOM	D14	THERMAL DETECTOR - 1ST FLR MECH RM NORTH
M15	MANUAL PULL STATION - VARSITY DRESSING ROOM	D15	SMOKE DETECTOR - 1ST FLR CUSTODIAL
M16	MANUAL PULL STATION - CORRIDOR EAST	D16	THERMAL DETECTOR - KITCHEN LAUNDRY
M17	MANUAL PULL STATION - CORRIDOR EAST	D17	THERMAL DETECTOR - KITCHEN
M18	RELAY MODULE - ELEVATOR RECALL; FIRST FLOOR	D18	THERMAL DETECTOR - KITCHEN
M19	RELAY MODULE - ELEVATOR RECALL; ALT FLOOR	D19	THERMAL DETECTOR - BASEMENT LAUNDRY
M20	RELAY MODULE - ELEVATOR RECALL; FIREHAT	D20	SMOKE DETECTOR - BASEMENT STORAGE
M21	MANUAL PULL STATION - 1ST FLOOR WEST CORRIDOR	D21	THERMAL DETECTOR - BASMENT CONTROL ROOM
M22	MONITOR MODULE - KITCHEN HOOD	D22	THERMAL DETECTOR - BASEMENT BOILER ROOM
M23	MANUAL PULL STATION - KITCHEN	D23	THERMAL DETECTOR - GYM B MECH ROOM
M24	MANUAL PULL STATION - 1ST FLOOR SOUTH CORRIDOR	D24	DUCT DETECTOR - GYM B MECH ROOM
M25	MANUAL PULL STATION - 1ST FLOOR EAST CORRIDOR	D25	DUCT DETECTOR - GYM B MECH ROOM
M26	MANUAL PULL STATION - BASEMENT	D26	THERMAL DETECTOR - UTILITY
M27	MANUAL PULL STATION - BASEMENT BOILER ROOM	D27	THERMAL DETECTOR - LAUNDRY
M28	MANUAL PULL STATION - GYM B MAIN ENTRY	D28	DUCT DETECTOR - 2ND FLR AUD MECH WEST
M29	RELAY MODULE - GYM B AHU SHUTDOWN	D29	DUCT DETECTOR - 2ND FLR AUD MECH WEST
M30	MANUAL PULL STATION - GYM B SW	D30	DUCT DETECTOR - 2ND FLR AUD MECH EAST
M31	MANUAL PULL STATION - GYM B SE	D31	DUCT DETECTOR - 2ND FLR AUD MECH EAST
M32	MANUAL PULL STATION - GYM B LOCKER RM EAST	D32	SMOKE DETECTOR - 2ND FLR ELEV LOBBY
M33	MANUAL PULL STATION - GYM B LOCKER RM WEST	D33	THERMAL DETECTOR - 2ND FLR MECH RM
M34	MANUAL PULL STATION - AUDITORIUM FLR MECH RM WEST	D34	SMOKE DETECTOR - 2ND FLR LAB STORAGE
M35	RELAY MODULE - AUDITORIUM WEST AHU SHUTDOWN	D35	SMOKE DETECTOR - 3RD FLOOR ELEVATOR LOBBY
M36	MANUAL PULL STATION - AUDITORIUM MECH RM EAST	D36	DUCT DETECTOR - 3RD FLR MECH ROOM
M37	RELAY MODULE - AUDITORIUM EAST AHU SHUTDOWN	D37	DUCT DETECTOR - 3RD FLR MECH ROOM
M38	MANUAL PULL STATION - AUDITORIUM BALCONY	D38	DUCT DETECTOR - 3RD FLR MECH ROOM
M39	MANUAL PULL STATION - AUDITORIUM BALCONY	D39	SMOKE DETECTOR - 3RD FLR MECHANICAL RM
M40	MANUAL PULL STATION - 2ND FLR NORTH CORRIDOR	D40	HI-TEMP THERMAL DETECTOR - 3RD FLR KILN
M41	MANUAL PULL STATION - LIBRARY NORTH	D41	DUCT DETECTOR - 2ND FLR MECHANICAL ROOM
M42	SPARE	D42	DUCT DETECTOR - 2ND FLR MECHANICAL ROOM
M43	SPARE		
M44	RELAY MODULE - 2ND FLR AHU SHUTDOWN		
M45	MANUAL PULL STATION - 2ND FLR CORRIDOR EAST		
M46	MANUAL PULL STATION - LIBRARY EAST		
M47	MANUAL PULL STATION - 2ND FLR SOUTH		
M48	MANUAL PULL STATION - LIBRARY SOUTH		
M49	MANUAL PULL STATION - 2ND FLR WEST		
M50	MANUAL PULL STATION - LIBRARY WEST		
M51	MANUAL PULL STATION - 3RD FLR NORTH CORRIDOR		
M52	RELAY MODULE - 3RD FLR MECH RM AHU SHUTDOWN		
M53	MANUAL PULL STATION - 3RD FLR EAST		
M54	MANUAL PULL STATION - 3RD FLR SOUTH		
M55	MANUAL PULL STATION - 3RD FLR WEST		

Nickols
Fire & Security

7752 Highway 70
Bartlett, TN. 38133

(901) 373-0128
Fax (901) 373-5631

SHEFFIELD HIGH SCHOOL
MEMPHIS, TN

Project #

File Name:

Date:

Salesman

Drawn by:

Project Mgr.

SHEET NAME

FIRE ALARM

Date:

Revisions:

Date:

Revisions:

Date:

Revisions:

Sheet #

10 of 10

As BUILT

FIRE ALARM "AS BUILTS"
SHEFFIELD HIGH SCHOOL
MEMPHIS, TN

General Notes

No.	Revision/Issue	Date
APPROVED BY:		

Firm Name and Address

 **ELECTRIC COMPANY**
Commercial & Industrial
P.O. Box 18416
Memphis, Tennessee 38181
901-365-9400

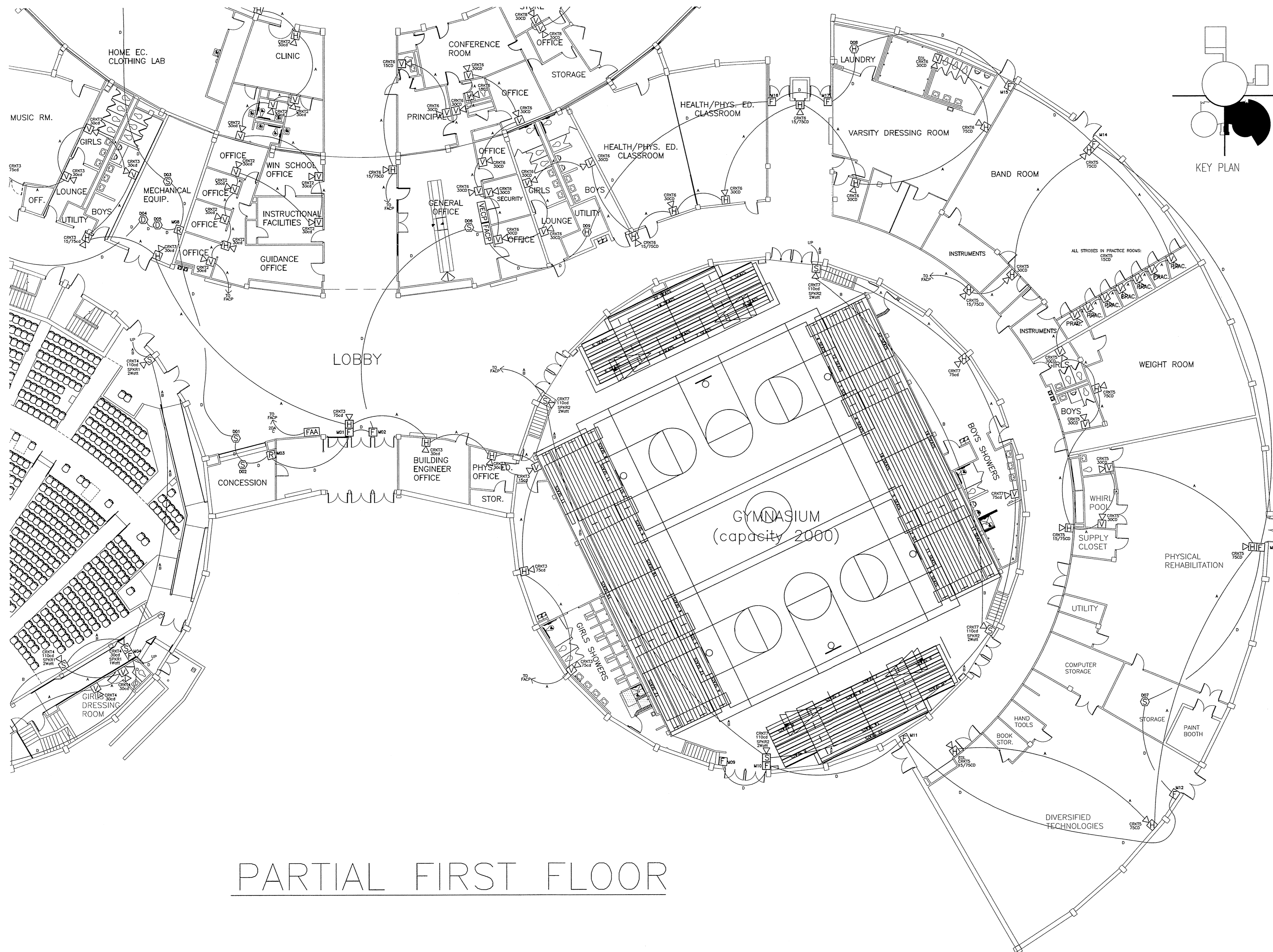
Project Name and Address

Project

Sheet

Date

Scale



PARTIAL FIRST FLOOR

Nickols
Fire & Security

7752 Highway 70
Bartlett, TN. 38133

(901) 373-0128
Fax (901) 373-5631

SHEFFIELD HIGH SCHOOL
MEMPHIS, TN

Project #	
File Name:	
Date:	Salesman
Drawn by:	Project Mgr.
SHEET NAME	
FIRE ALARM	
Date:	Revisions:
Date:	Revisions:
Date:	Revisions:
Sheet #	
2 10	
of	

AS BUILT